
Leadership and Professional Development in a 1:1 Learning Environment

Reeds Spring School District

~Michael Mason Superintendent mmason@wolves.k12.mo.us

~Janna Elfrink Director of Instructional Technology [@jelfrink](https://twitter.com/jelfrink)

jelfrink@wolves.k12.mo.us

Today's Meet Communication Link

<https://todaysmeeet.com/RSSD>

Add your questions or comments in Today's
Meet

THICK

**TODAY'S PEN AND PAPER
HAS CHANGED**

Reeds Spring School District

- Approximately 1900 students K-12
 - 650 students (HS)
 - 350 students (MS grades 7-8)
- 63% District-wide Free/Reduced Lunch
- 94% Students w/ access to wireless internet at home (parent survey)



Why 1:1 and not BYO?

Even playing field
Capabilities

Common Language

Professional Development

Network Security

Consistent Change



1:1 Background Information

Planning Phase: Fall 2011

Lead Team: Admins, Teachers, Students Fall 2011

Parent and Community involvement: Spring 2013

Roll Out: Spring 2013

Vision & Goals

- Through partnership w/ Anytime Anywhere Learning Foundation ([AALF](#)), lead teams developed our vision and goals.
- These are revised each year as we meet our goals and meet new challenges.
- Today these are no longer separate but part of BSIPs.

Professional Development: Prior to Implementation

Teacher 1:1 Lead Team (content leaders)

Goals and Objectives

Pedagogy Shift

Site Visits

Student Voice Group

Parent Meetings

Standard Procedure Training

-Dyknow, Gaggle & OneNote



Support and Training

- Often overlooked, yet vital to your success
- Must be systematic and ongoing
- Support and training take on new meanings

Our partnership with Anytime Anywhere Learning Foundation ([AALF](#))

Professional Development

- Peer Coaches- Building Capacity
- Job embedded, relevant, differentiated, timely
- Personalized Learning
- 4 C's embedded
- Culture of Collaboration

Measurements of Success: Focus on Goals

Direct evidence

Depth of Student Engagement measured by:

- Teacher Professional Learning Plan
- SAMR Student Engagement Walk-Through Tool
- IPI and IPI-T (Instructional Practices Inventory) Tools
- Teacher and Student Feedback/Surveys
- NEE

Measurements of Success: Focus on Goals

Direct evidence

Implementation of the 4 Cs (Communication, Collaboration, Critical

Thinking, and Creativity) measured by:

- Teacher Professional Learning Plan
- SAMR Student Engagement Walk-Through Tool
- IPI and IPI-T (Instructional Practices Inventory) Tools
- Teacher and Student Feedback/Surveys
- Coaching Reports from Anytime Anywhere Learning Foundation
- NEE

Measurements of Success

Indirect Evidence

- Discipline
- Attendance
- Things not possible prior: Program Implementation (Smart Music, DyKnow, One Note, Gaggle, Acuity, Online Courses, Scholastic Reading Inventory)

Logistics

ER

Loaners

Maintenance Fee

Open/Closed Network

Content Filtering

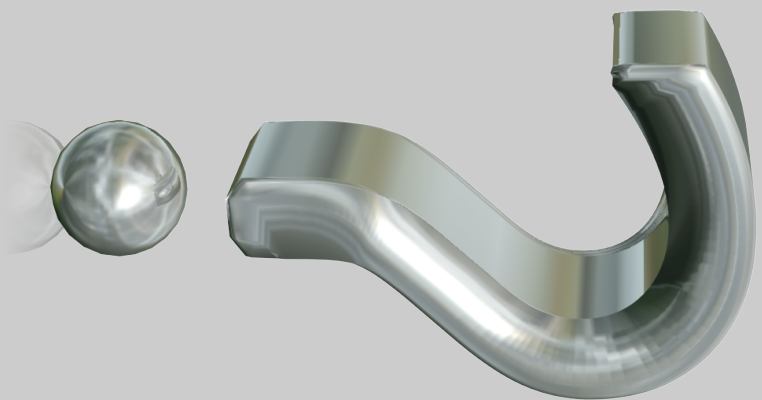
Distribution



(Our) Steps To a Successful Transition

- Know your short-term and long-term vision
- Research, research, research
- Don't forget PD
- Involve all stakeholder groups
- Don't let money drive your transition
- You may be looking for different leaders and teachers in a digital learning environment
- Evaluate and assess your progress throughout your phases of implementation

Your Turn: Q & A



<http://goo.gl/esvEzw>